

Digital plus News in 2013 by Lenz



All in one hand: LH01

All in one hand.

Are you looking for an easy-to-operate, low-cost manual control that offers all features that a digital system offers today?

Have a look at our new LH01:

Press top

- ▶ Switch points
- ▶ Switch signals

Press left

- ▶ Switch functions
- ▶ Configure functions

Turn

- ▶ Set speed
- ▶ Select functions
- ▶ Select data

Press middle

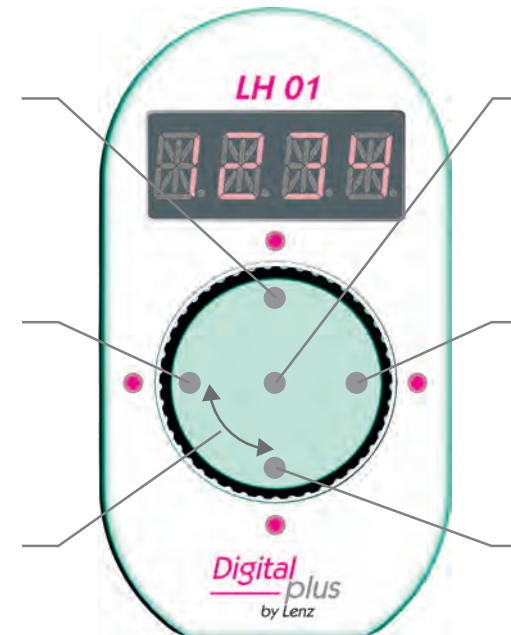
- ▶ Change direction
- ▶ Emergency stop
- ▶ Enter

Press right

- ▶ Select locomotive

Press bottom

- ▶ System menu



The LH01 is a device for the XpressNet® and uses all advantages of this fast bus system. The LH01 can be plugged and unplugged during operation. The locomotive last operated is stored and can be operated again immediately.

In addition, the XpressNet operates bi-directionally: information can be called up from the control. When selecting a new locomotive, for example, the speed, direction of travel, and function settings are transmitted. The operation can be continued seamlessly.

The LH01 can be used with the well-known Digital plus command stations LZ100 and LZV100 (from version 3.6 up) as well as the new command station LZV01 of the new starter package SET 01.

Art.Nr. 21010 - Manual control LH01- RRP: 49,95 Euro

3D Drawing

Digital plus

An ideal introduction to the pleasure of model railway operation

Manual control, command station, and power supply - all in one, immediately ready for operation. All key features are available at an extremely attractive price.

Components

The set comprises

- ✓ Power supply (mains adapter approx. 4A)
- ✓ Command station with amplifier LZV01
- ✓ Manual control LH01

Connection

Easy wiring of devices to each other using only plug-in connectors .

XpressNet

The LH01 is connected with the command station via the XpressNet. Advantage: The LH01 can be plugged and unplugged during operation. Up to 31 devices can be used at the XpressNet.

Locomotive addresses

Locomotive addresses range from 1 - 9999.

Locomotive functions and configuration

Up to 29 functions are available for each locomotive address. Each function can be set independently to permanent or temporary operation. This setting is stored with the locomotive address.

Permanent function: Press the key once to activate this function and once more to deactivate the function.

Temporary function: This function is activated as long as the corresponding key is pressed. As soon as the key is released, the function is deactivated.

Speed steps

The Starter Set uses 28 speed steps.

Double traction

Two locomotives can be assembled in a double traction and controlled simultaneously. Several such double tractions can be set.

This setting is saved even when the device is switched off.

Programming in operational mode (PoM)

You can program the features of a locomotive decoder while the locomotive is placed somewhere on the track system.

When using locomotive decoders that support the RailCom function, CVs can be read out.

Programming on the programming track

In addition to reading and writing the locomotive address, all CVs can be read and written.

Magnetic articles

To switch points and signals.

Power supply

Through mains adapter enclosed in the delivery.

Amplifiers

Up to 10 additional (new) amplifiers can be connected .

Overload protection

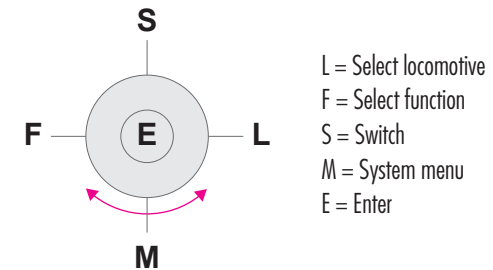
The device is protected against short circuits and overheating.

LH01

Large 4-digit 14-segment LED display

Control elements

Multi-functional rotary button for easy intuitive operation:



Art.Nr. 60010 - Start SET01- RRP: 129,95 Euro



The new software for Programmer and Interfaces

The newly designed "CV-Editor" software will soon be available as free download on our website.

This software, which was until now only available with the USB, LAN/USB Interface as well as the Programmer can be used with all other existing Digital plus interfaces.

New features:

- ✓ Usable with all Digital plus interfaces, including RS232, USB and LAN connection (fig. 1)
- ✓ Decoder templates for all Digital plus decoders as well as for all Lenz 0 locomotives (fig. 2)
- ✓ Integrated editor for decoder descriptions facilitates the designing of customised decoder templates (fig. 3)
- ✓ Manual programming for decoders for which no template is available (fig. 4)
- ✓ Panel for immediate testing of settings (fig. 5)
- ✓ Optional "Programming on the programming track" or "Programming in operational mode"
- ✓ Saving of decoder configurations: to restore proven decoder configurations
- ✓ Firmware update of Digital plus decoders (from version 7.0 up) when using the "Programmer"
- ✓ Suitable from Digital plus version 3.6
- ✓ For Windows XP, Windows 7 and Windows 8

You will find this software in the download area of our website.

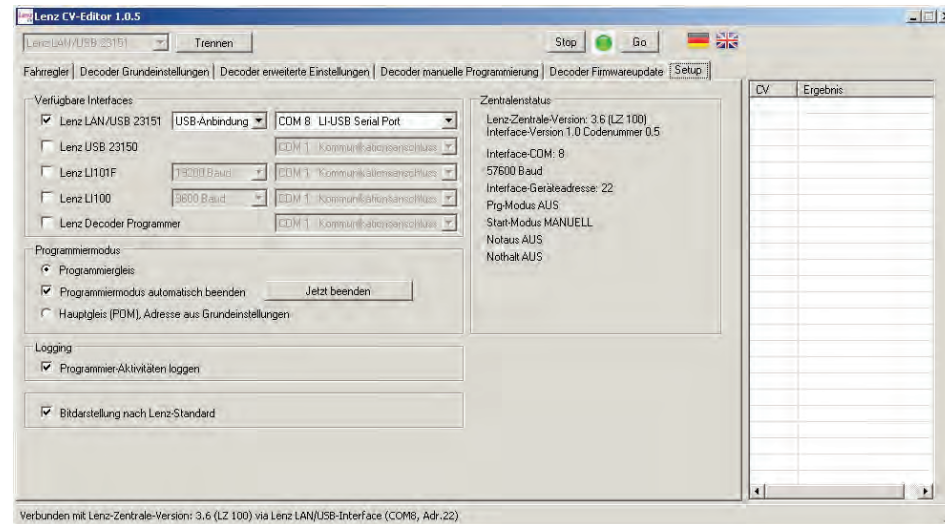


Fig. 1: No matter which Digital plus interface you use: this software knows them all

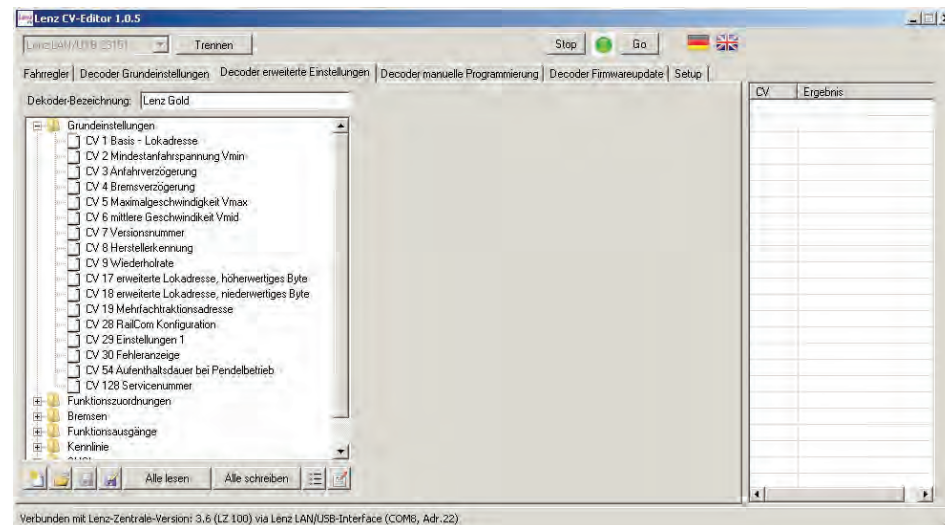


Fig. 2: Decoder templates for all Digital plus decoders as well as for Lenz 0 locomotives are included or can be downloaded on our website

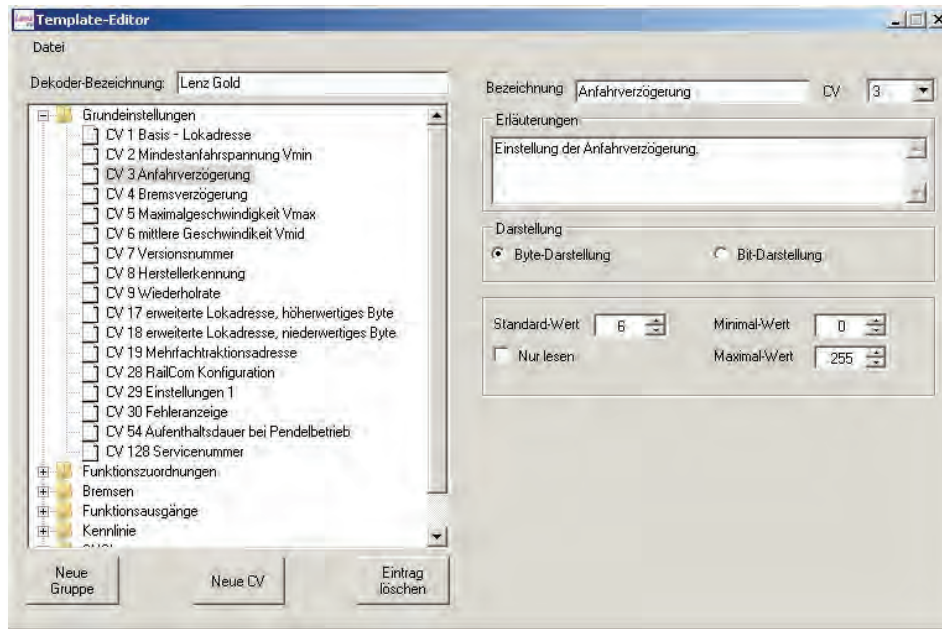


Fig. 3: Design templates for any decoder - exactly as you like

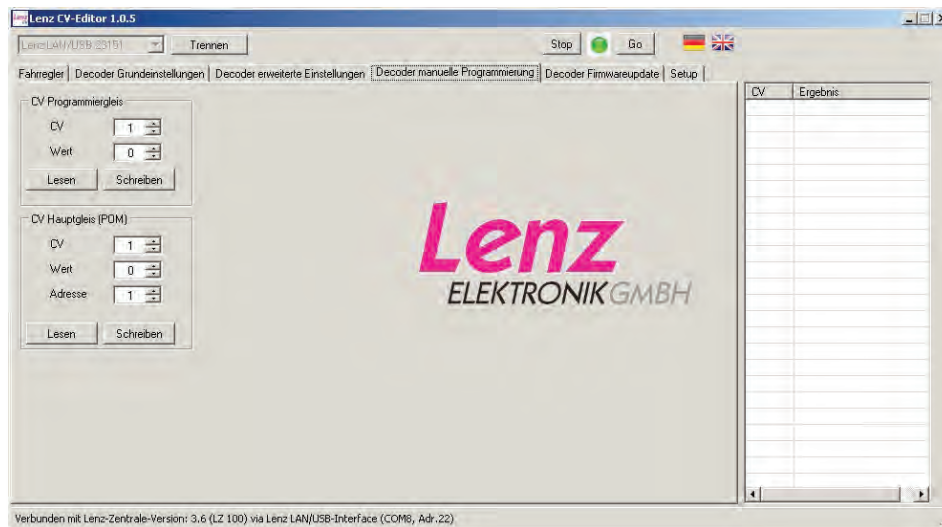


Fig. 4: Each CV can be read and written - even if you don't have a template for this decoder

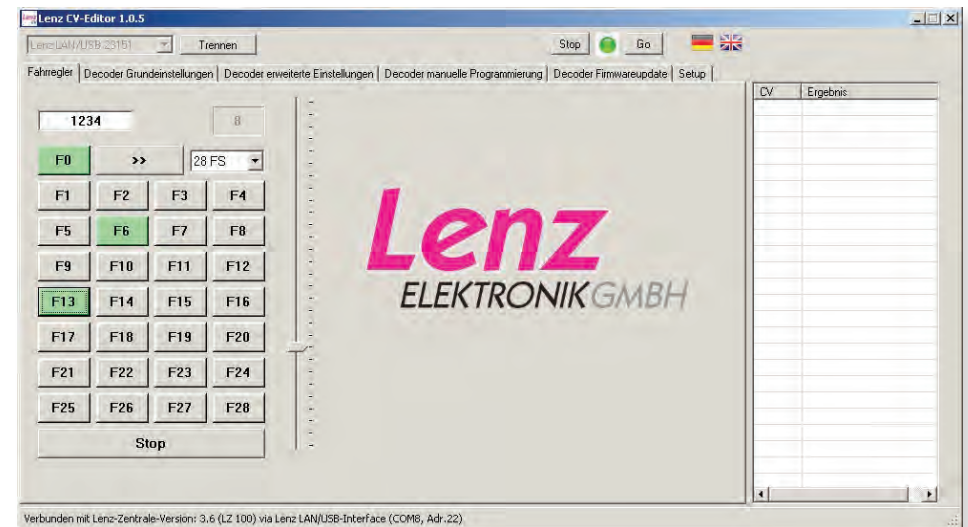


Fig. 5: Integrated manual control for checking your settings or for test driving of a new locomotive, e.g. on a roller rig

The new GOLD maxi + Digital plus for gauge 0

GOLD maxi +

What is good for our gauge 0 locomotives is also available for the locomotives of other manufacturers: Our new gauge 0 decoder now offers all well-known features for installation in other locomotives:

- ✓ Output current 3A duration, 5A peak
- ✓ 8 function outputs with 100mA load capacity each
- ✓ 2 function outputs with 500mA load capacity each, ideal for couplings
- ✓ USP ensures uninterrupted data transmission to the decoder, even in case of dirty tracks
- ✓ Integrated energy storage for uninterrupted operation
- ✓ S.U.S.I. interface
- ✓ RailCom
- ✓ ABC

An intelligent circuit ensures that the locomotive starts in conventional operation even at low voltages, as if not decoder was installed. This is particularly useful if you would like to use the locomotive in analogue systems.

Art.Nr. 10450 - GOLD maxi +

Image similar



*Convenient for gauge 0 as well:
Digital plus manual controls LH100 (left) and LH90 (right).*



Wireless control with Digital plus LAN/USB-Interface, a router and TouchCab for iPhone or iPod.

Already in the nineteen-eighties Lenz Elektronik has developed the basics for today's DCC norm. Meanwhile this is a little forgotten.

But we didn't have a rest on that. Aside from our participation in the ongoing development of the NMRA standards we have introduced many innovations, setting benchmarks for model railroaders:



Our intelligent USP circuit is much more than an energy storage device. USP ensures uninterrupted communication between the command station and the decoder, even if track contact is interrupted, e.g. due to dirt. USP is integrated in all Lenz gauge 0 locomotives.



The clever way of braking and stopping. Adjustable braking distance and precise stopping. This is what we call reliable. Of course, shuttle trains are possible with ABC too.



Bidirectional exchange of data. Together with other manufacturers we will enhance RailCom permanently. The decoders of Lenz gauge 0 locomotives of course send RailCom informations, just like the GOLD maxi + does.